


# Agenda Item 4

		<b>THE HEALTH SCRUTINY COMMITTEE FOR LINCOLNSHIRE</b>	
Boston Borough Council	East Lindsey District Council	City of Lincoln Council	Lincolnshire County Council
North Kesteven District Council	South Holland District Council	South Kesteven District Council	West Lindsey District Council

Report to	<b>Health Scrutiny Committee for Lincolnshire</b>
Date:	<b>18 May 2022</b>
Subject:	<b>Supplementary Chairman's Announcements</b>

## 1. Membership

### City of Lincoln Council

Following the elections at the City of Lincoln Council on 5 May 2022, Councillor Bill Bilton is no longer a councillor. The City of Lincoln Council has nominated Councillor Jane Loffhagen to serve as its representative on this Committee in his place.

### Boston Borough Council

On 16 May 2022, Boston Borough Council appointed Councillor Katie Chalmers as its representative on this Committee. Councillor Stephen Woodliffe will be the replacement member.

## 2. Covid-19 Update

Lincolnshire County Council Public Health now produces Covid-19 briefings every fortnight, with the most recent briefing issued on 9 May 2022. A report is attached at Appendix A, which is based on this briefing.

### 3. Healthwatch Lincolnshire – Latest Findings on Access to Dental Services

On 16 May 2022, Healthwatch Lincolnshire published its findings from a quick poll survey, where 45% of the 236 respondents reported having no NHS Dentist. Over the past year, the Healthwatch Lincolnshire has repeatedly heard from individuals who have each contacted more than ten dental surgeries to register with an NHS practice, but with no success. Healthwatch reports that people have been able to register with many of these practices as private patients. Some individuals sought help from a range of different services, including NHS 111, while others were left with no other choice but to pay for private treatment. Some people remained in pain, as they were unable to get treatment.

Healthwatch Lincolnshire has made four recommendations:

1. A more rapid and radical reform of the way dentistry is commissioned and provided is needed, which would ensure people are not excluded from NHS provision.
2. Using the reform of commissioning to tackle the twin crises of access and affordability, with the new arrangements maximising access to NHS dental services, with particular emphasis on reducing inequalities.
3. There should be greater clarity in the information around NHS dentistry, so people know where and how they can access NHS dental services, and the charges they will need to pay.
4. Using dental practices to support people's general health should be explored, for example by using primary care networks.

The full report is available at:

[Dentistry Quick Poll Results Report | Healthwatch Lincolnshire](#)

### 4. Working in Partnership with People and Communities Draft Guidance

On 11 May 2022, NHS England and NHS Improvement issued draft statutory guidance entitled: *Working in Partnership with People and Communities Draft Guidance*, with a request for responses on its content by 30 May 2022. The finalised statutory guidance is intended to apply to NHS integrated care boards, NHS trusts, NHS foundation trusts and NHS England from 1 July 2022. This is the reason for short consultation period.

Section A of the guidance sets out how it should be used, the benefits for NHS organisations of working with people and communities such as improved health outcomes, better decision-making and addressing health inequalities. Section B details the approaches for different engagement contexts and how different NHS organisations can create relationships with their local communities. The guidance is structured around ten principles for working with people and communities:

1. Ensure people and communities have an active role in decision-making and governance.
2. Involve people and communities at every stage and feed back to them about how it has influenced activities and decisions.

3. Understand community needs, experiences, ideas and aspirations for health and care.
4. Build relationships based on trust, especially with marginalised groups and those affected by inequalities.
5. Work with Healthwatch and the voluntary and community sector as key partners.
6. Provide clear and accessible public information.
7. Use community-centred approaches that empower people and communities, making connections to what works already.
8. Use insight and engagement methods so people and communities can actively participate in health and care services.
9. Tackle system priorities and service reconfiguration in partnership with people and communities.
10. Learn from what works and build on the assets of all partners – networks, relationships and activity in local places.

The document describes the existing role of health overview and scrutiny committees, and includes in Chapter 9 (Service Reconfiguration and Public Consultation) the statement that the chapter would be reviewed and updated, in response to the new legislation and the forthcoming revised guidance on health overview and scrutiny.

The full consultation document and online response form are available at:

[Working in Partnership with People and Communities: Summary of draft guidance - NHS England - Citizen Space](#)

## **5. United Lincolnshire Hospitals NHS Trust: Nuclear Medicine**

On 13 April 2022, the Committee finalised its response to the consultation by United Lincolnshire Hospitals NHS Trust (ULHT) on the proposals for the future configuration of its nuclear medicine service. I would like to remind members of the Committee that the closing date to this consultation has been extended from 23 May to 6 June 2022, so there is still an opportunity for local communities to submit their response. Details of the consultation may be found at:

[Consultation \(ulh.nhs.uk\)](http://ulh.nhs.uk)

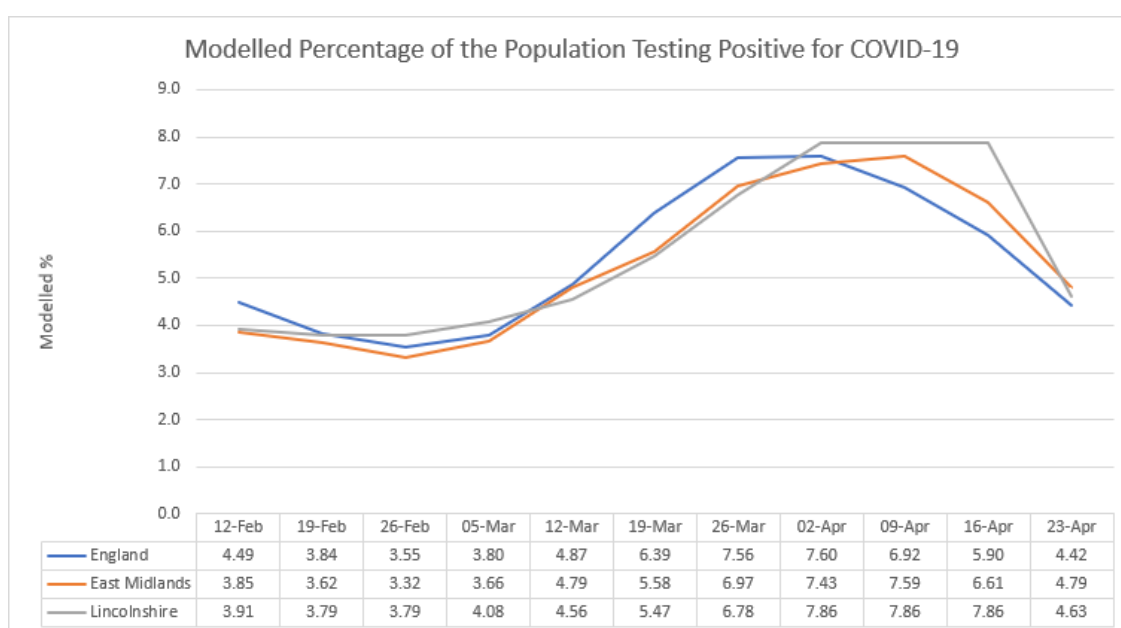
## COVID-19 BRIEFING – 9 May 2022

Following changes to the Government policy on 1 April 2022, test and case data should now be used with caution. As a result Public Health has included the latest Office for National Statistics (ONS) Infection Survey as an indication of estimated Covid-19 prevalence.

### A. Coronavirus Infection Survey (Office for National Statistics)

#### ONS Infection Survey

In England, the percentage of people testing positive for coronavirus continued to decrease in the week ending 23 April 2022. It is estimated that 4.42% (1 in 25) of the population had Covid 19. This is a decrease from the previous week (5.90% or 1 in 17).



#### Deaths – Greater Lincolnshire (Updated: 6 May 2022)

	Total Covid-19 Deaths to 6-May-2022	Covid-19 Deaths for 7 Days [30-Apr- 6-May-2022]
Boston	236	1
East Lindsey	545	0
Lincoln	264	0
North Kesteven	282	1
South Holland	285	0
South Kesteven	349	2
West Lindsey	267	7
<b>Lincolnshire</b>	<b>2,228</b>	<b>11</b>

Vaccinations in Lincolnshire – Period Covered 8 December 2020 – 1 May 2022

(Published: 5 May 2022)

Age Group	Numbers			Percentages		
	First Dose	Second Dose	Booster or Third Dose	At Least One Dose	Two Doses	Booster or Third Dose
Younger/Unknown	(~)	49	96	-	-	-
5 - 11	4,955	14	72	8.1	-	-
12 - 15	22,369	14,003	1,271	67.6	42.3	-
16 -17	12,561	9,499	2,429	81.3	61.5	15.7
18 - 24	49,522	46,009	28,433	82.9	77.0	47.6
25 - 29	35,244	33,097	21,371	84.5	79.4	51.3
30 - 34	38,236	36,184	24,906	88.2	83.5	57.5
35 – 39	37,950	36,514	27,426	89.1	85.7	64.4
40 – 44	38,280	37,177	30,093	94.7	91.9	74.4
45 – 49	40,177	39,394	33,910	84.9	83.2	71.6
50 – 54	51,697	50,934	45,903	96.0	94.6	85.2
55 – 59	55,527	54,947	50,866	97.5	96.5	89.4
60 – 64	51,580	51,119	48,118	100.0	100.0	94.8
65 – 69	45,794	45,477	43,907	96.1	95.4	92.1
70 – 74	46,514	46,249	45,177	91.5	91.0	88.9
75 – 79	40,360	40,203	39,508	100.0	100.0	100.0
Over 80	47,642	47,473	46,640	100.0	100.0	98.8

The numbers of people who have been vaccinated for Covid-19 split by age group are published by NHS England and NHS Improvement. All figures are presented by date of vaccination as recorded on the National Immunisation Management Service (NIMS) database.

100.0% signifies that the number who have received their first dose exceeds the latest official estimates of the population from the ONS for this group. (~) suggests that figures have been withheld owing to the small numbers.

This page is intentionally left blank